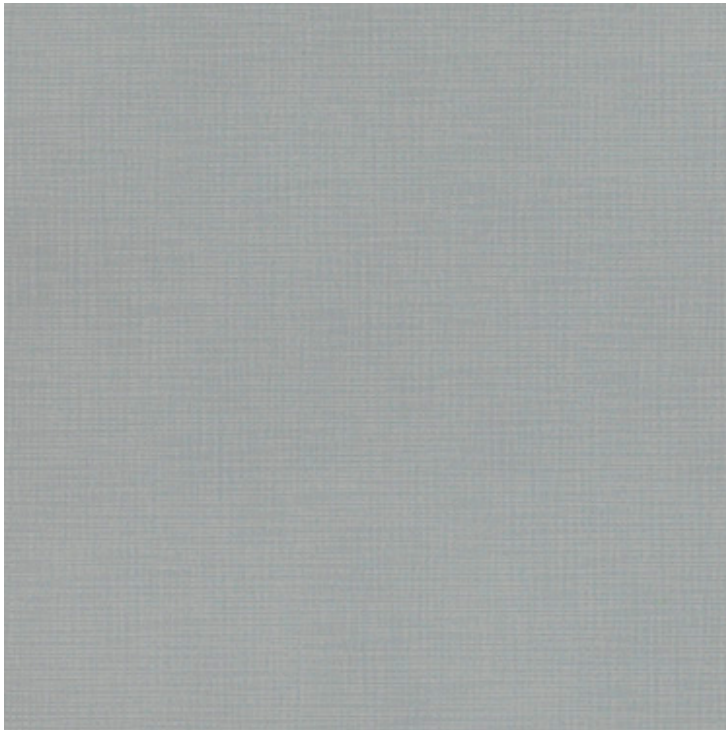


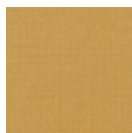
# Silica Etch – Product Specifications



**Pattern:** Silica Etch  
**Color:** Wistful  
**Product Number:** 09158048  
**Price:** \$66.50  
**Content:** 100% Silicone  
**Reduced Environmental Impact:**  
GREENGUARD Gold Certified; PVC Free  
**Repeat:**  
**Railroaded:** No  
**Dye:** N/a  
**Backing:** Polyester  
**Finish:** -  
**Durability:** 270,000 D.R.  
**Flame Resistance:** CA Bulletin 117 2013; UFAC  
Class 1; NFPA 260 Class 1  
**Width:** 54"  
**Weight:** 1.47 lb.  
**Maintenance:** WS - Water-Based Cleaning Agents  
Or Foam; Bleach Cleanable (4:1)  
**Proprietary:** ©2015



Almond



Barley



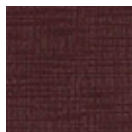
Brickberry



Camel



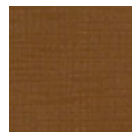
Celadon



Chambord



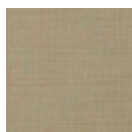
Copper



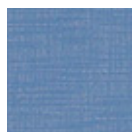
Derby



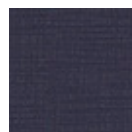
Doe



Flint



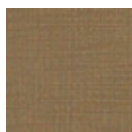
French



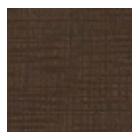
Ink



Juniper



Manta



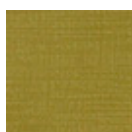
Mink



Mustang



Nickel



Palm



Plum



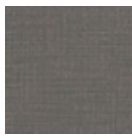
Rain



Multiple factors affect fabric durability and appearance retention, including end-user application and proper maintenance. Wyzenbeek results above 100,000 double rubs have not been shown to be an indicator of increased lifespan.



Sage



Slate



Wetstone



Wistful

---

[print \[ > \]](#)

[close](#) 