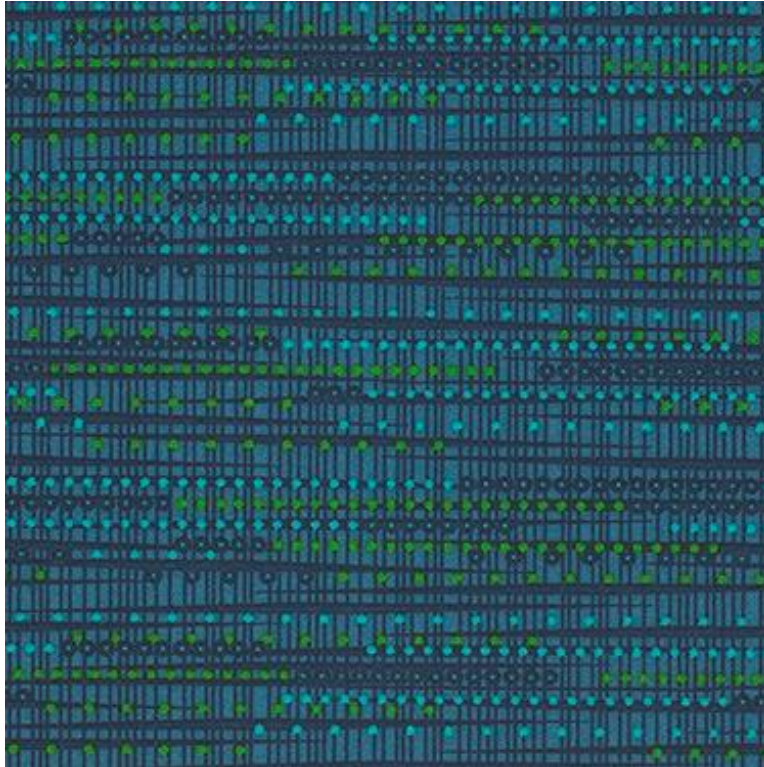




Cleaning Guide



Pattern: Silica Etc.

Color: Cobalt

Product Number: 09193831

Content: 100% Silicone

WS General Recommendations

- Clean with water-based foam or upholstery cleaner or dry cleaning solvents
- Do not saturate with liquids
- Do not get the furniture wet

Regular Maintenance

- Clean monthly with a clean, soft, colorfast, damp, soapy cloth or sponge and rinse with clean water

Stain Treatment and Spot Cleaning

A professional cleaning service is recommended

Treat stains quickly

- It will become increasingly difficult to remove the longer a stain is allowed to set
- Pretest any cleaning method or agent in a small hidden inconspicuous area
- Several less concentrated applications are less damaging than one concentrated application

Remove fluids immediately by blotting with a clean, colorfast, absorbent cloth

Flush stain with water and dry with clean cloth

Remove solid or semi-solid substances

- Using a flat object, remove as much of the stain as possible
- After removal, vacuum thoroughly using the proper attachments before cleaning with an agent

Abrasive household cleansers and steel wool should be avoided



Cleaning Guide

Bleach Cleanable

To disinfect spray a 4:1 ratio water/bleach mixture on the fabric and allow to linger for the time specified by the Centers for Disease Control and Prevention.

Rinse all cleaning agents thoroughly with water and wipe with a soft cloth

- Residue left by cleaning agents will degrade and shorten the life and/or affect the product's appearance if not removed.

Approved Cleaners

This list represents some of the most common options available and is not intended to be comprehensive.

3M Neutral Cleaner 3H
Accel Prevention
Accel TB
Asepticare TB + II
Birex SE
Citrace
Clorox Bleach (4:1 water to bleach)
Clorox Healthcare Bleach Germicidal Cleaner
Clorox Healthcare Hydrogen Peroxide Cleaner
Coverage Spray HB (Steris)
Dispatch
Isopropyl Alcohol
Lysol Advanced Wipes
Lysol Spray
Optim 33 TB Wipes
Oxivir TB
Oxycide
PDI Sani-Cloth HB Germicidal
PDI Super Sani-Cloth
Peridox RTU
Perisept
Rescue
Sani-wipes
Virex II 256
Virox 5 Concentrate
Virox 5 RTU
Wexcide

The cleaning recommendations above are a guide to help in the maintenance of Momentum Textiles fabrics. They are supplied without warranty, representation or inducement of any kind, including, but not limited to, the implied warranties of merchantability and fitness for particular use or purpose. Momentum Textiles can neither guarantee, nor take responsibility for specific results.

Under no circumstances shall Momentum be liable for any incidental, consequential, or other damage resulting from negligence, misuse, mishandling or exposure of any chemicals used in connection with maintenance. Information relating to chemicals/cleaning solvents, environmental use, and human exposure should be reviewed with appropriate suppliers. Users must read the product specifications and determine appropriateness for specific applications. All label instructions on their use and precautions should be followed.